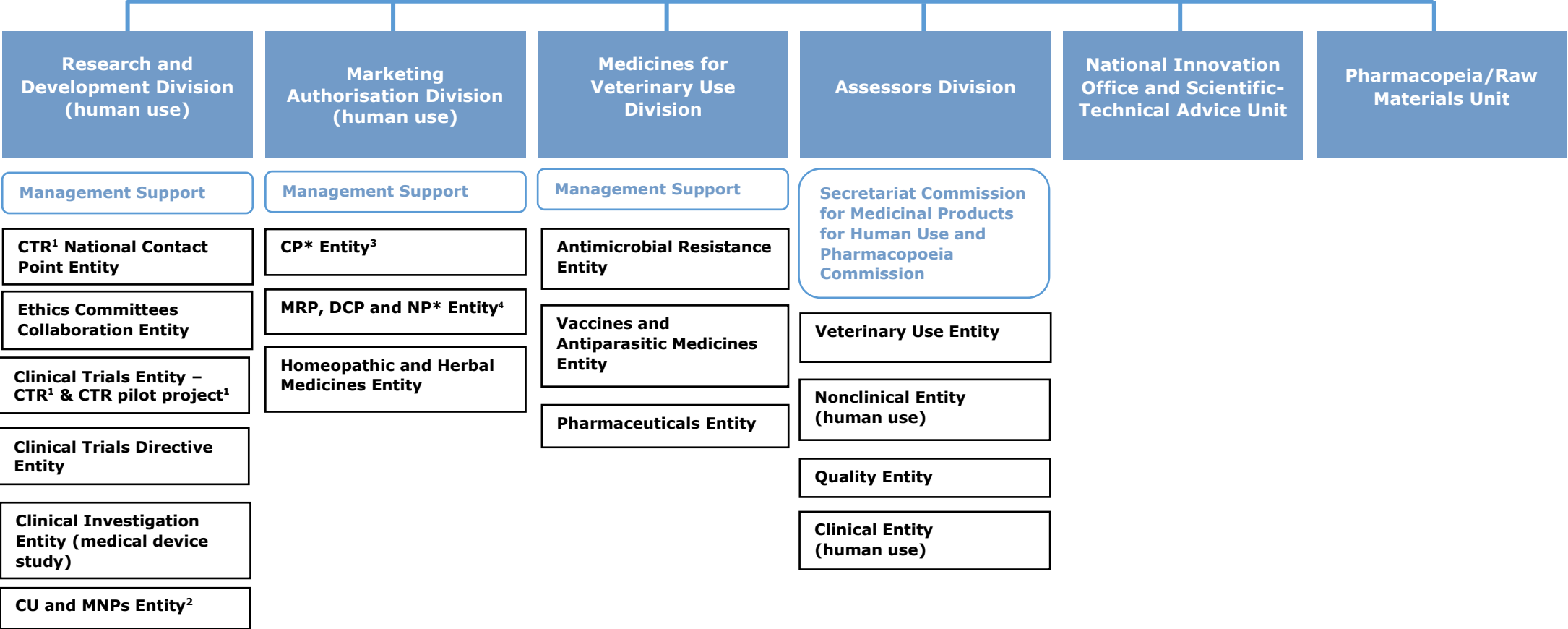


**Directorate General PRE  
authorisation**

Management Support



<sup>1</sup> CTR = Clinical Trial Regulation  
<sup>2</sup>Compassionate Use and Medical Need Programs Entity  
<sup>3</sup>CP = Centralised Procedure  
<sup>4</sup>MRP/DCP/NP = Mutual Recognition Procedure/Decentralised Procedure/National Procedure