



BeCRO

Belgian Association of CROs

Direct to Patient (=D2P) Survey Results

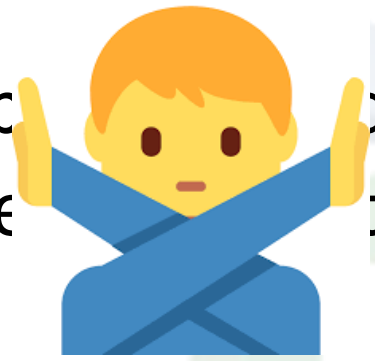
Philippe Van der Hofstadt
BeCRO





What is Direct-to-Patient (D2P)?

- Shipping clinical supplies from a depot or packaging facility directly to patients home



- Shipping clinical supplies from a clinical site directly to patients home



- Home health care providers delivering clinical supplies to patients home



clinical supplies





D2P Working Group

- Professional Associations
- FlandersBio, Lifetech Brussels, BioWin
- Pharma Companies
- CROs
- Patient/Patient Association
- Cabinet of Minister Social Affairs & Public Health
- AFMPS-FAGG



D2P WG Objectives

- To ensure D2P shipments are allowed in Belgium without breaching ICH, legislation, nor GXP, nor declaration of Helsinki
- To position Belgium as an innovator in Clinical Research
- To confirm Belgian's competitive edge in CR
- To take a EU lead in lobbying on D2P shipments and partner with foreign stakeholders



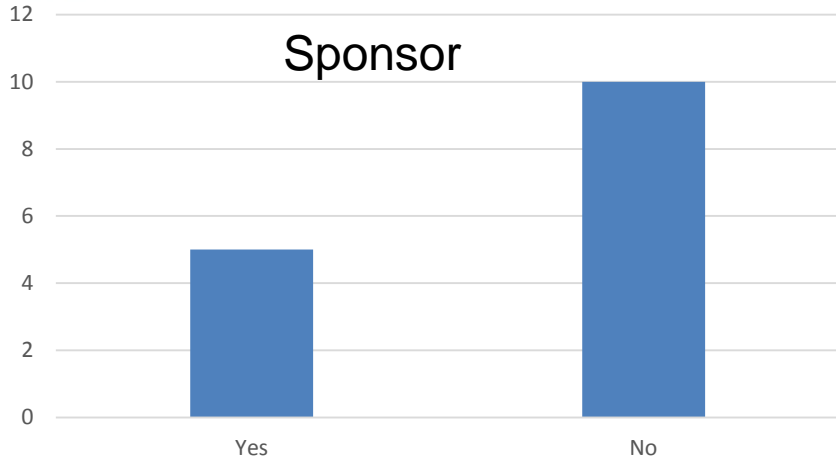
Survey on D2P

- Patient: 10 => 5 <https://www.surveymonkey.co.uk/r/6TV6MQX>
- Sponsor: 22 => 15 <https://www.surveymonkey.co.uk/r/D2PSponsor>
- CRO: 18 => 16 <https://www.surveymonkey.co.uk/r/RYSM8WYCRO>
- Investigator: 64 => 62 <https://www.surveymonkey.co.uk/r/VQHSKX2Investigators>

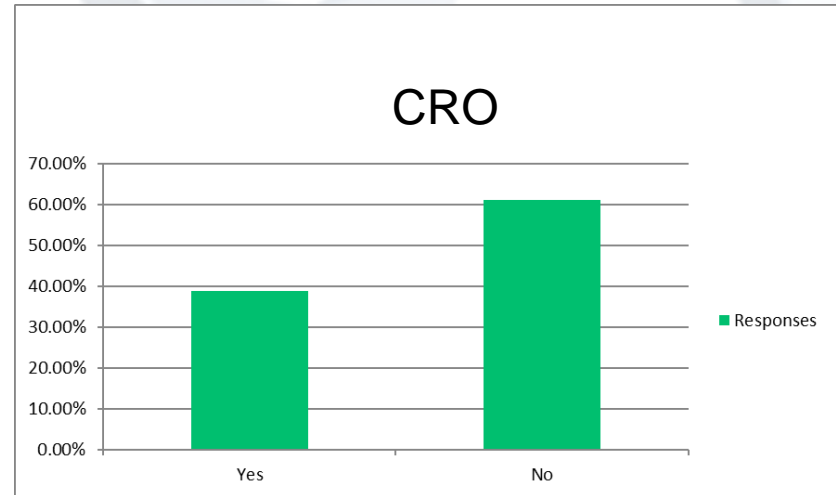


Experience with D2P

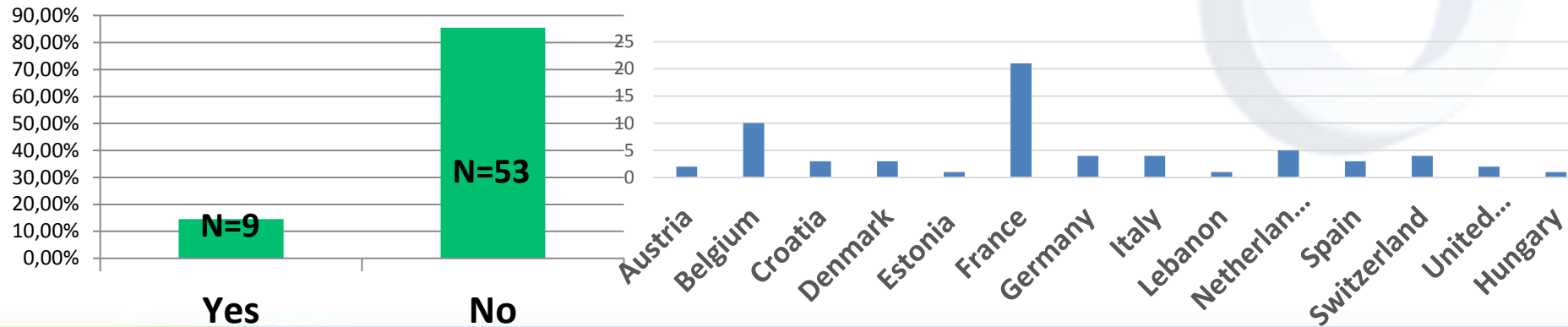
Sponsor



CRO



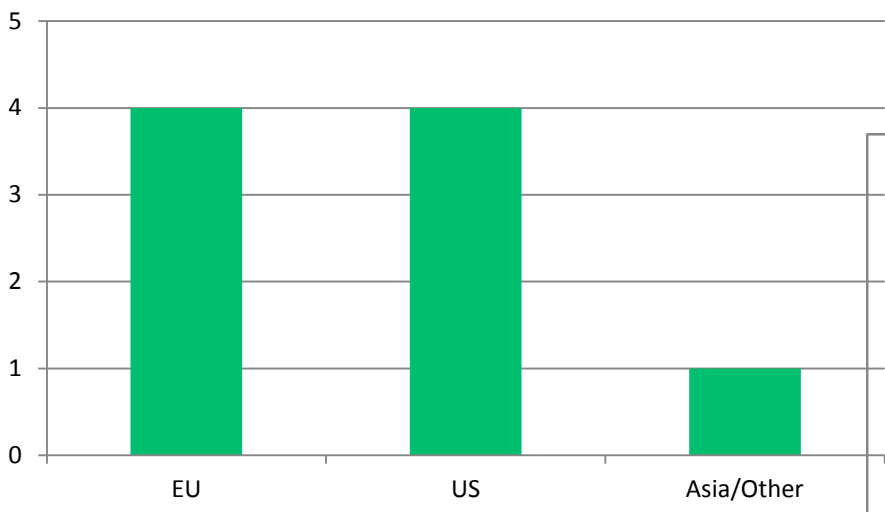
Investigator



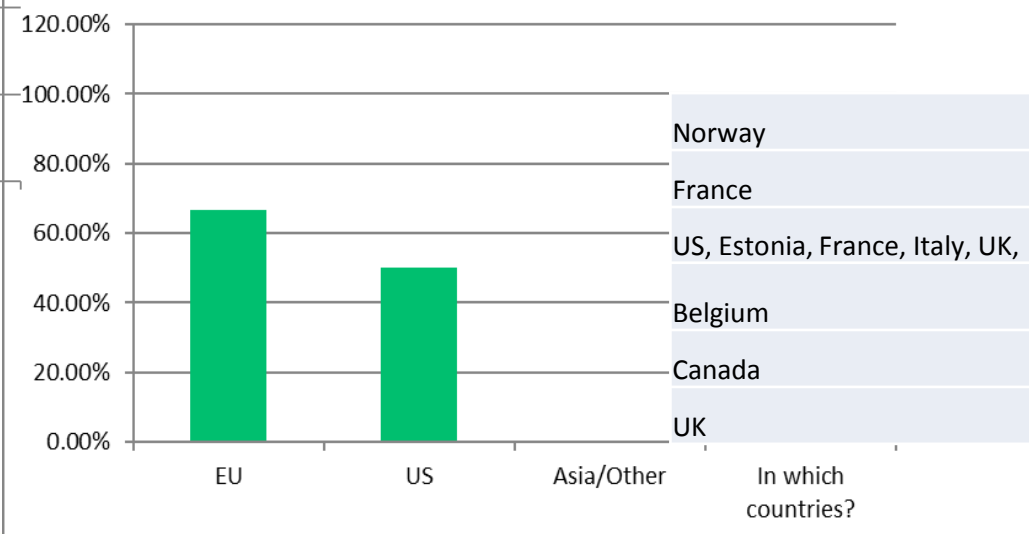


Where did you apply D2P?

Sponsor



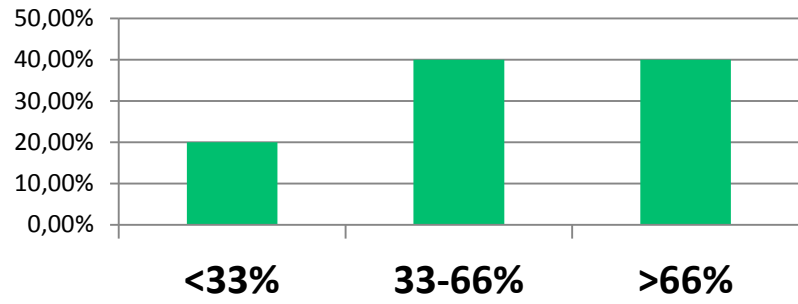
CRO



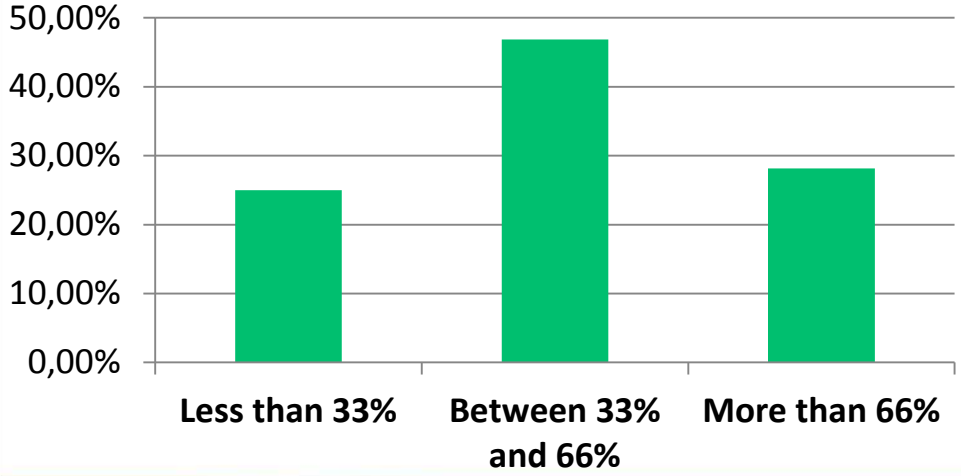


What % patients did accept D2P?

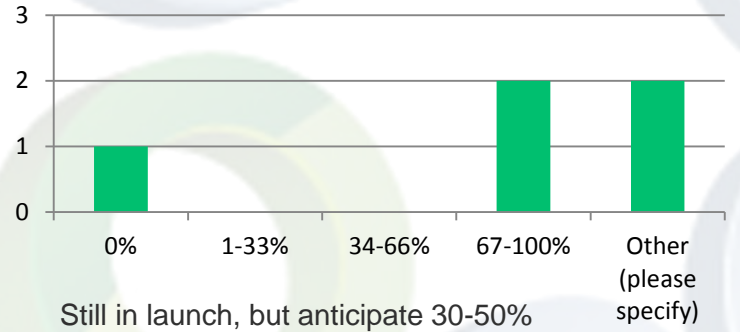
Investigator with experience



Investigator without experience

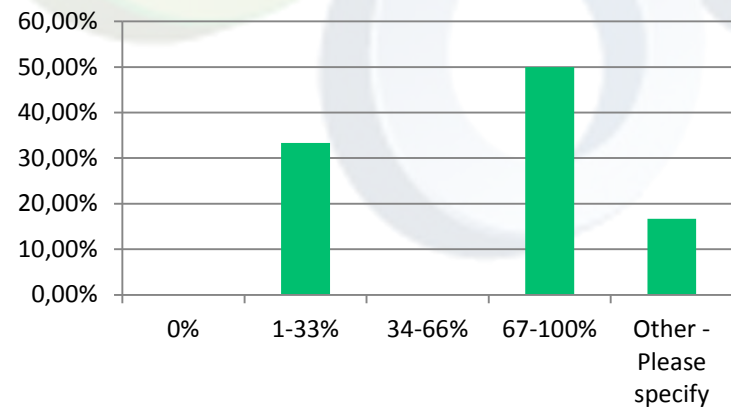


Sponsor



Still in launch, but anticipate 30-50%
100% since there was no alternative delivery method

CRO



some trials not analysed, some trials without choice, therefore 100%

AFMP

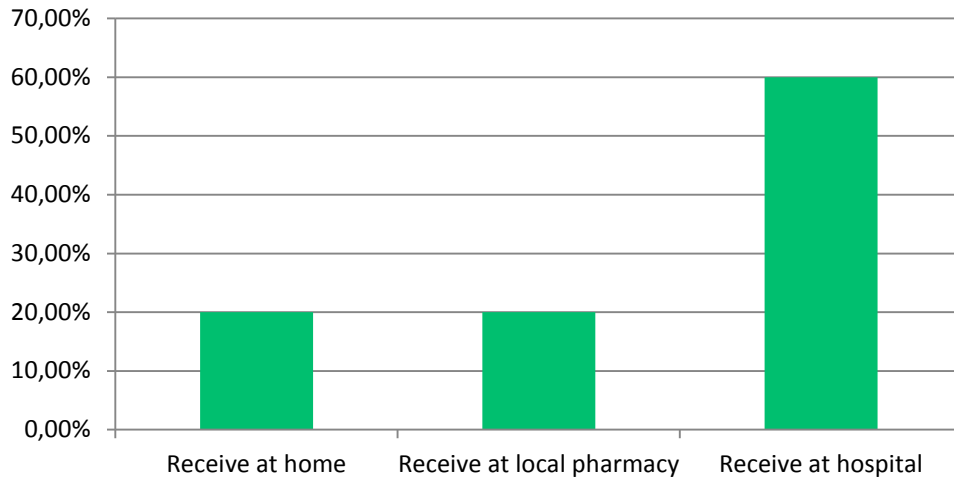
Less than 33%	8
Between 33% and 66%	15
More than 66%	9



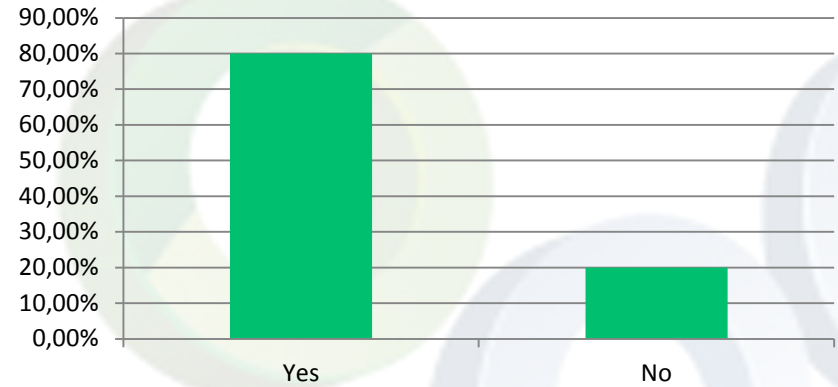


Patient perspective on D2P (n=5)

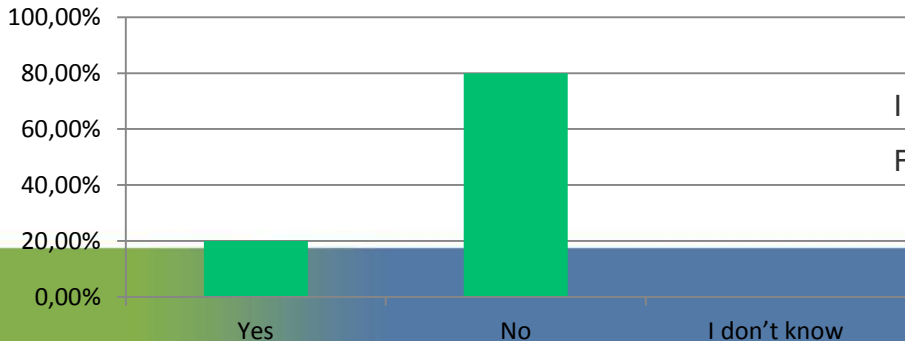
Patient preferred way of receiving the drugs



Do you live near a hospital (less than 15km)?



If you could receive your medication at home or via your local pharmacy, would you be more likely to participate in a trial?



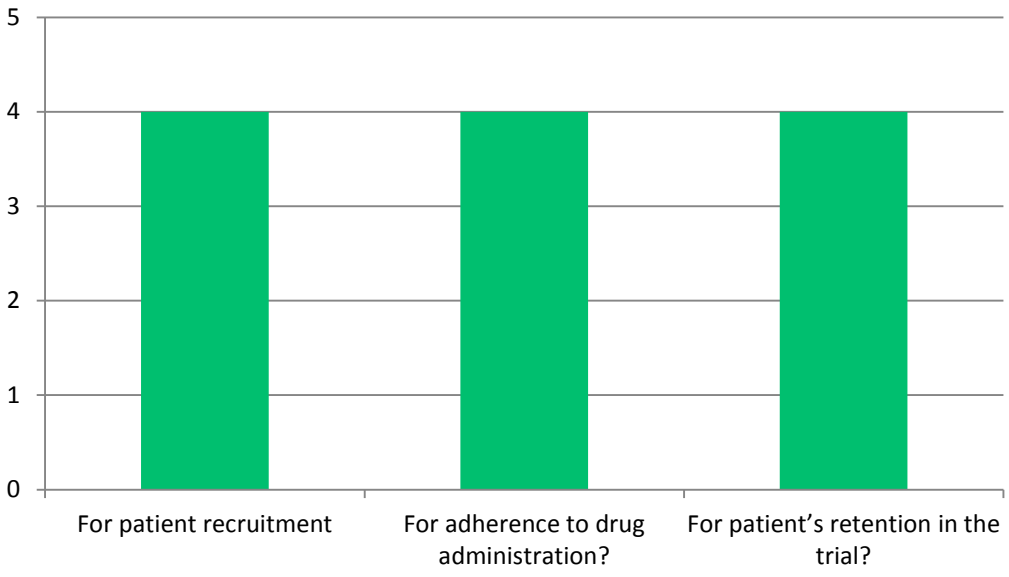
I will have the feeling there is less follow-up than in the hospital

Follow-up: concerns about a less professional medical follow-up at home

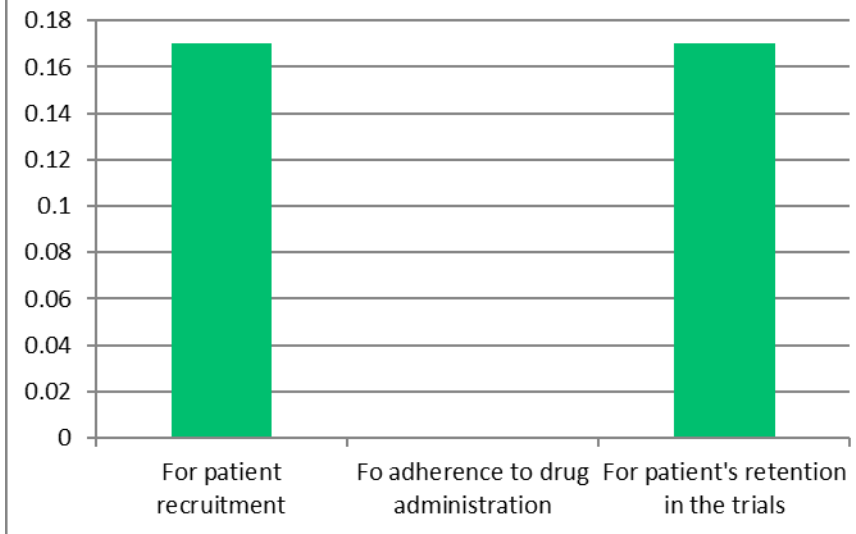


Would D2P be beneficial to CT?

Sponsor with experience



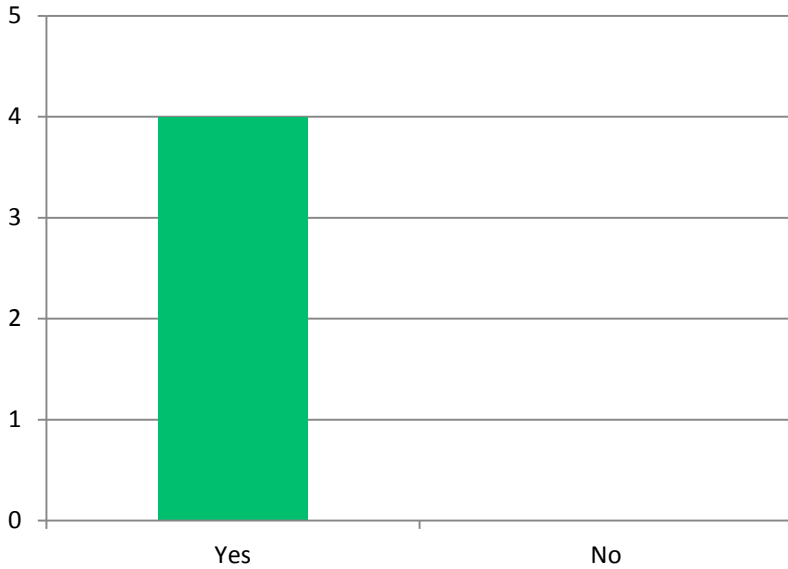
All CROs



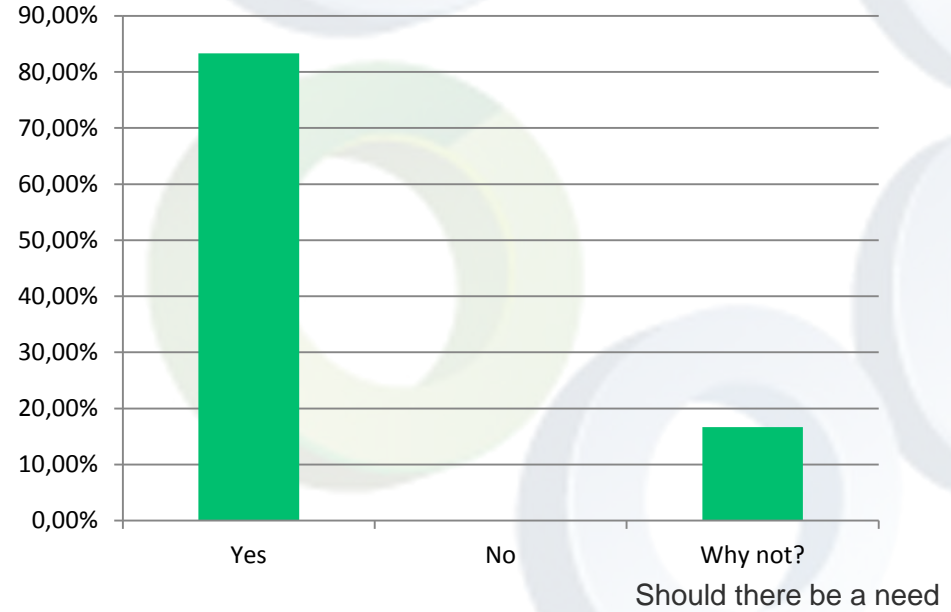


Would you do D2P again?

Sponsor

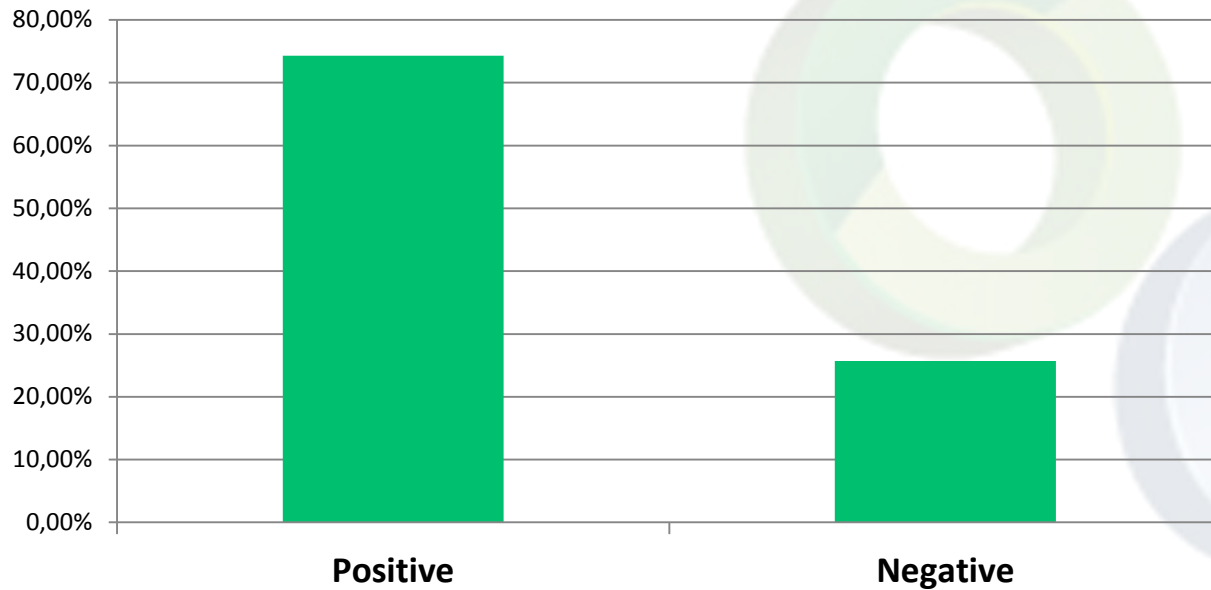


CRO





How do you as investigator feel about the option of D2P? (n=35)





Thank you

Questions or interest to contribute?
pvanderhofstadt@csmondemand.com

